

1/3 Les prick test

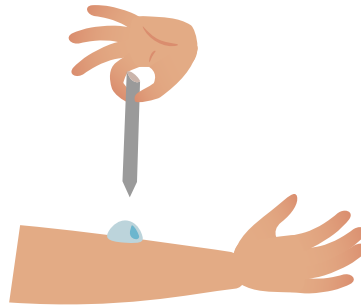
DROP METHOD

1



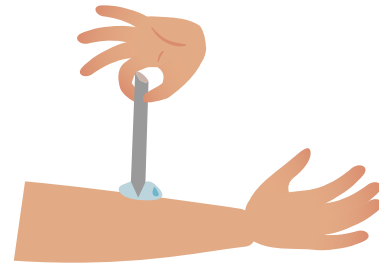
Put the drop on the skin
of allergen solution

2



Take a lancet

3

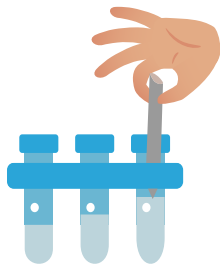


Prick the skin
through the drop

2/3 Les prick test

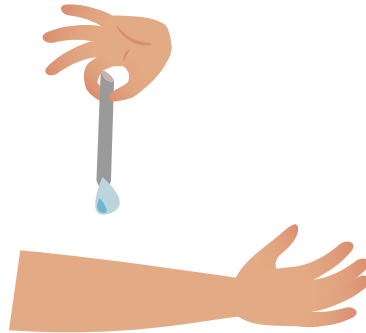
DIP METHOD

1



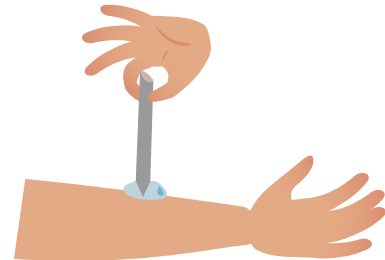
Dip the lancet
in allergen solution

2



Put the lancet vertically

3

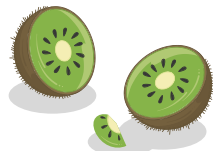


Prick the skin
with the drop

3/3 Les prick test

NATIVE METHOD

1



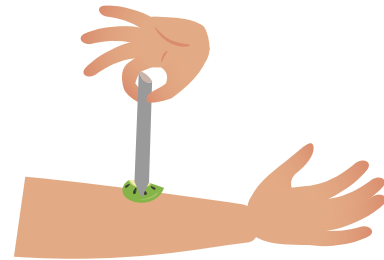
Cut a part of food

2



Put the part on the skin

3



Prick the skin
through the part

Evaluation du diagnostic

RESULTAT

1



10 minutes

2



Negative

or



Positive